

# LINCOLN AVENUE WATER COMPANY

## Annual Report of Operations



2025

# Table of Contents

---

1	Letter from General Manager
2	Eaton Canyon Wildfire
3	Olive Avenue Pumping & Treatment Facility
4	Glenrose, Wapello and Ware Reservoirs
5	North Coulter Reservoir
6	South Coulter Slope Stabilization
7	The Road to Recovery
8	Snapshots
9	LA County Sheriff's Bus Pull Fundraiser
10	2025 Water Production by Source
11	Water Sales and Production for 2025
12	Energy Cost by Pump Station and Wells (2021-2025)
13	Annual Production (2016-2025)
14	Annual Production by Source (2016-2025)
14	Total Annual Production (2016-2025)
15	Annual Water Sales (2016-2025)
16	Meters and Service Connections
16	Total Number of Meters by Size
17	Well Production Capacity
17	Distribution Lines
18	Total Annual Canyon Water Basin Recharge
18	Water Quality Compliance
19	Board of Directors
20	Office Staff
21	Field Staff

---

# LINCOLN AVENUE WATER COMPANY

March 31, 2026

John Clairday, President  
Board of Directors  
Lincoln Avenue Water Company  
564 W Harriet Street  
Altadena, CA 91001



Dear Board of Directors and Shareholders:

The year was defined by extraordinary circumstances that tested the system and required a sustained operational response. The Eaton Fire significantly affected Company facilities, resulting in damage to infrastructure. In the aftermath, field personnel mobilized quickly to stabilize the system and restore service where possible. This work included identifying and repairing leaks, replacing or turning off damaged meters and valves, and addressing service limitations by installing appropriately sized lines where needed.

In parallel with field operations, office staff activated emergency procedures to maintain continuity of service and respond to a substantial increase in customer communication. Administrative functions remained operational throughout the emergency, ensuring that customers continued to receive timely information and support. The coordinated efforts of both field and office teams were critical, and staff across the organization demonstrated a high level of commitment under demanding conditions.

System integrity and water quality remained central priorities throughout the year. Required sampling and monitoring were consistently performed in compliance with regulatory standards, and maintenance was carried out to support dependable operations.

Financially, the impacts of the year's events were significant. The Company has ongoing expenses associated with emergency response, infrastructure repairs, and system maintenance. Although some fire-related costs may qualify for FEMA reimbursement, any recovery is expected to be partial and subject to a prolonged review process. Insurance proceeds are available for the damaged facilities and will help mitigate a portion of the financial burden. Efforts are also underway to obtain state funding to assist with both repair costs and ongoing operational needs.

Finally, I would like to recognize the efforts of Lincoln Avenue staff, whose professionalism and dedication were instrumental in navigating the demands of the past year and ensuring safe and reliable drinking water to our customers.

Sincerely,

Jennifer Betancourt Torres  
General Manager

# EATON CANYON WILDFIRE

The Eaton Fire, which began on January 7, 2025, in Eaton Canyon, became one of the most destructive wildfires in California history. Fueled by extreme Santa Ana winds, the fire burned approximately 14,000 acres over 24 days, resulting in the devastating loss of 19 lives and the destruction of more than 9,400 homes and structures.

---

The fire had a profound impact on the service area of Lincoln Avenue Water Company, affecting infrastructure, operations, and the broader community we serve. The scale of destruction and displacement created immediate operational challenges and continues to influence recovery efforts.

---

In all there were approximately 2,600 damaged or destroyed homes in the Lincoln Avenue service area alone. This accounts for 58% of our customers.

---



THE FIRE DESTROYED A HOME OWNED BY THE COMPANY.  
THE GROUNDWATER TREATMENT PLANT CAN BE SEEN IN THE DISTANCE.

# OLIVE AVENUE PUMPING & TREATMENT FACILITY

---



Steel flashing has come loose from the reservoir roof, revealing the wooden frame underneath.



System Operator Jack Harms prepares to inspect the damage.



The transformer, electrical pole and wires at our pumping facility were destroyed.

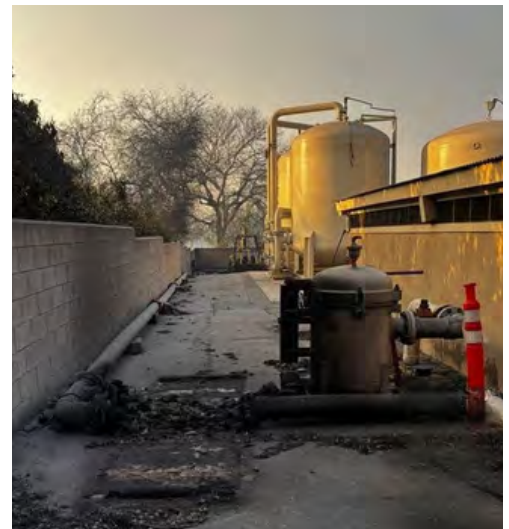


A 125-foot cinder block wall sustained damage due to the intense heat.

The electrical conduit had been scorched.



A backwash filter was scorched, and the PVC pipe melted.



A fallen tree has caused damage to a section of the wrought iron fence below.



Right: A palm tree was charred solely at the base of its trunk, resulting in a hollow center.



## WAPELLO RESERVOIR



Sections of the steel roof became detached from the frame, and utility wires had fallen.



Originally piled four feet high, the PVC pipe melted down to ground level.

The fire consumed the pallet and asphalt that were used to store this steel pipe.

## WARE RESERVOIR



# NORTH COULTER RESERVOIR



The North Coulter Reservoir serves as a raw water reservoir and is an essential part of our surface water treatment facility. Local canyon water is diverted into the reservoir, where it undergoes processing at the treatment plant.

In addition to sustaining a partial roof collapse, our communications tower also incurred damage.

The surface water treatment facility will remain offline until the necessary repairs to the reservoir are completed.

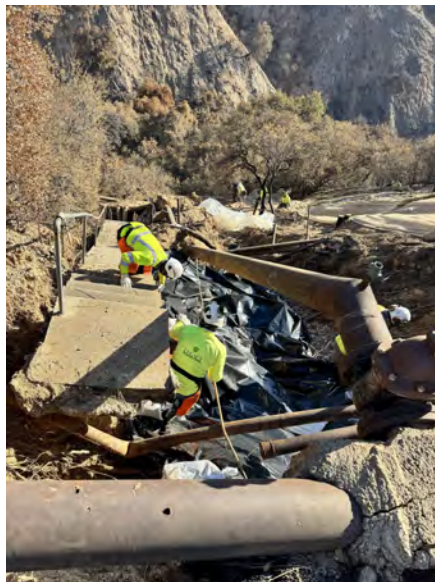


WITH THE SUPPORT OF LA COUNTY SUPERVISOR KATHRYN BARGER, THIS SITE WAS INCORPORATED INTO THE ARMY CORPS OF ENGINEERS' DEBRIS REMOVAL CONTRACT, RESULTING IN SAVINGS OF OVER \$30,000 IN DEBRIS REMOVAL COSTS.



# SOUTH COULTER RESERVOIR SLOPE STABILIZATION

The Eaton Fire caused significant damage to a crucial slope next to the South Coulter Reservoir, leading to a landslide that has compromised the stability of the hillside. Emergency measures have been put in place to mitigate immediate risks from rainfall and further erosion; however, these solutions are temporary and do not address the long-term concerns.



# THE ROAD TO RECOVERY

---

## Community and System Recovery

Recovery across the service area remains ongoing and closely tied to the pace of rebuilding.

Widespread loss of homes resulted in reduced system demand. However, the system must still be maintained and repaired.

Lincoln Avenue consistently prioritizes capital improvements, creating defensible space, and removal of combustible materials around essential facilities. These efforts contributed to the limited damage sustained by core infrastructure within burn areas.

Staff continues to support rebuilding by inspecting service lines, replacing damaged components, and working directly with contractors and property owners. We remain committed to working alongside local agencies to ensure that recovery efforts are coordinated and efficient.

---

## Financial Recovery

Insurance coverage is in place to assist with most infrastructure repairs, including reservoir damage. Additionally, we continue to actively pursue state funding to alleviate operational and recovery expenses while ensuring financial stability through the reinstatement of the standby/service charge. Our financial planning addresses both urgent recovery requirements and ongoing investments in system reliability.

---

## Looking Ahead

The Company will persist in enhancing its proactive strategy by investing in system hardening, redundancy, emergency preparedness, and long-term infrastructure improvements.

Resilience is a continuous endeavor that demands ongoing evaluation and adaptation.

The Eaton Fire posed extraordinary challenges, yet Lincoln Avenue Water Company remains dedicated to ensuring reliable service, financial stability, and enduring resilience.

# SNAPSHOTS

---

Southern California Edison crew installs a new transformer and utility pole to restore power at the main pumping facility.



Field Supervisor Michael Cotter successfully puts out a flare-up at the Altadena Community Garden.

Staff inspects the scorched hillside surrounding La Vina Reservoir



John Earnest, Jeremy Rogers, and Andy Estrada are working tirelessly throughout the night to stabilize the system.

# LA COUNTY SHERIFF'S BUS PULL FUNDRAISER

THE ALTADENA WATER AGENCIES—INCLUDING THE LINCOLN AVENUE WATER COMPANY, RUBIO CANON LAND & WATER ASSOCIATION, KINNELOA IRRIGATION DISTRICT, AND FOOTHILL MUNICIPAL WATER DISTRICT—CAME TOGETHER FOR AN EVENT AIMED AT RAISING FUNDS FOR THE SURVIVORS OF THE EATON FIRE.



**PROUD TO CLAIM THE TOP SPOT**

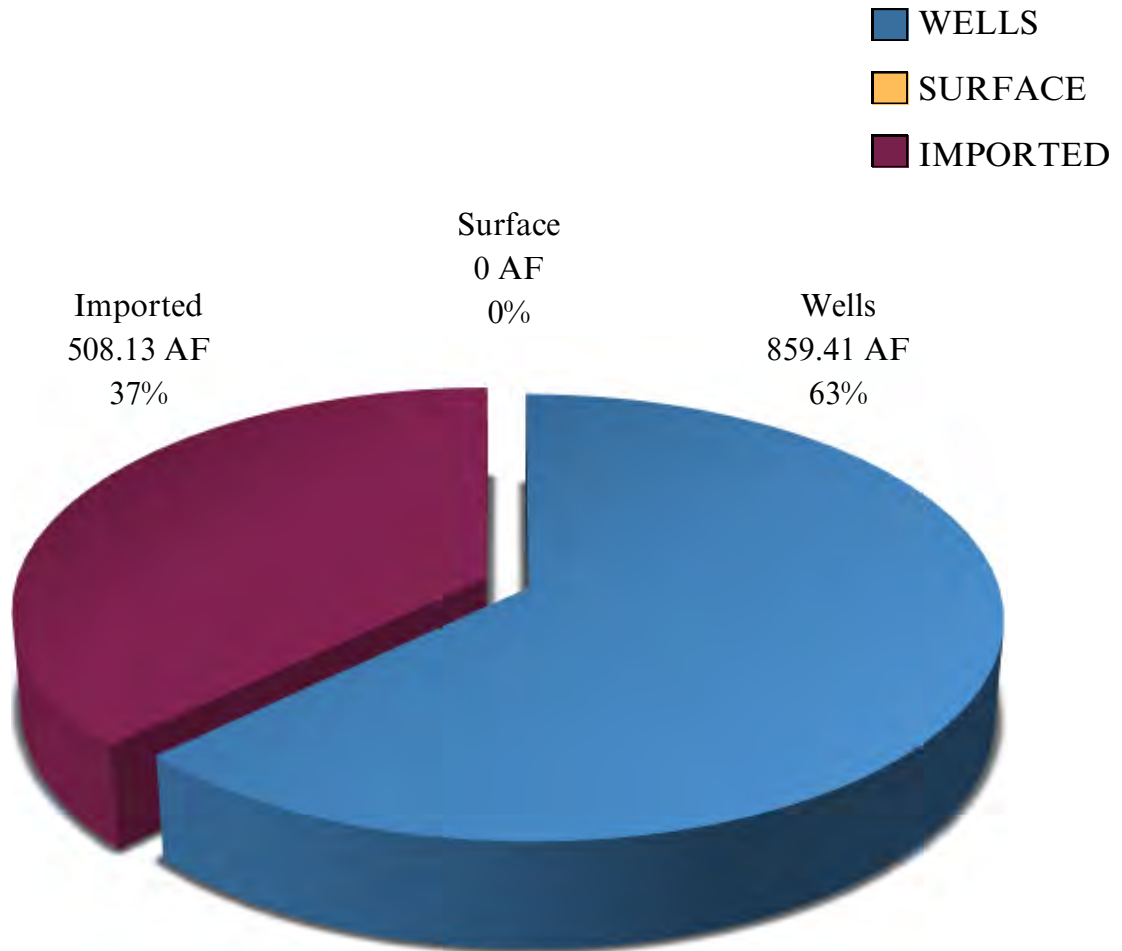


**LAWC OPERATOR  
JEREMY ROGERS IS  
FULLY DEDICATED  
TO HIS ROLE**



**LAWC OPERATOR  
JOHN EARNEST TAKES  
ON THE CRUCIAL  
ANCHOR POSITION**

## 2025 WATER PRODUCTION BY SOURCE



Wells	859.41 AF
Surface	0.00 AF
Imported	509.13 AF
<b>Total Production</b>	<b>1,368.54 AF</b>

**WATER SALES AND PRODUCTION FOR 2025  
IN ACRE FEET**

MONTH	IMPORTED WATER PURCHASE	WELL PRODUCTION	LOCAL SURFACE WATER	TOTAL PRODUCTION	INTERTIE WATER DELIVERED	SALES	RAIN FALL (INCHES)
January	187.28	32.79	0.00	220.07	0.00	0.00	0.00
February	77.82	0.22	0.00	78.04	0.00	27.35	5.86
March	62.53	0.58	0.00	63.11	0.00	34.21	3.08
April	85.01	3.73	0.00	88.74	0.09	45.21	0.49
May	85.38	16.16	0.00	101.54	0.00	53.45	1.52
June	0.16	110.83	0.00	110.99	5.29	63.65	0.06
July	0.00	124.94	0.00	124.94	27.54	84.73	0.00
August	0.00	142.52	0.00	142.52	28.30	87.72	0.00
September	7.71	136.92	0.00	144.63	39.51	102.82	0.00
October	3.24	119.92	0.00	123.16	40.96	75.22	2.55
November	0.00	89.15	0.00	89.15	20.68	67.32	8.27
December	0.00	81.65	0.00	81.65	21.32	50.46	6.03
<b>TOTAL</b>	<b>509.13</b>	<b>859.41</b>	<b>0.00</b>	<b>1368.54</b>	<b>183.69</b>	<b>692.13</b>	<b>27.86</b>

**PUMPED FROM WELLS**

WELL #3	0.60
WELL #5	36.05
WELL #6	822.76
<b>TOTAL</b>	<u>859.41</u>

Total Production	<u>1368.54</u>
Intertie Water Delivery	-183.69
Production for Lincoln	1184.85
Total Sales	<u>-692.13</u>
Non-Sales Production	492.72
	or 42%

**Non-Sales Production** is water used during treatment plant operations, fire fighting, leaks on fire impacted properties, fire contamination mitigation flushing, repressurizing system post fire, routine water quality sampling, evaporation from reservoirs, irrigation at Company sites, water quality flushing, pipeline ditch compaction and dust control, leaks on mains, etc.

The Company's well production consists of 567 acre feet\* of annual decreed right plus spread credit from mountain run-off, and available leased groundwater rights.

\*Decreed right curtailed to 430.92 due to declining groundwater levels.

**ENERGY COST BY WELLS AND PUMP STATIONS  
2021-2025**

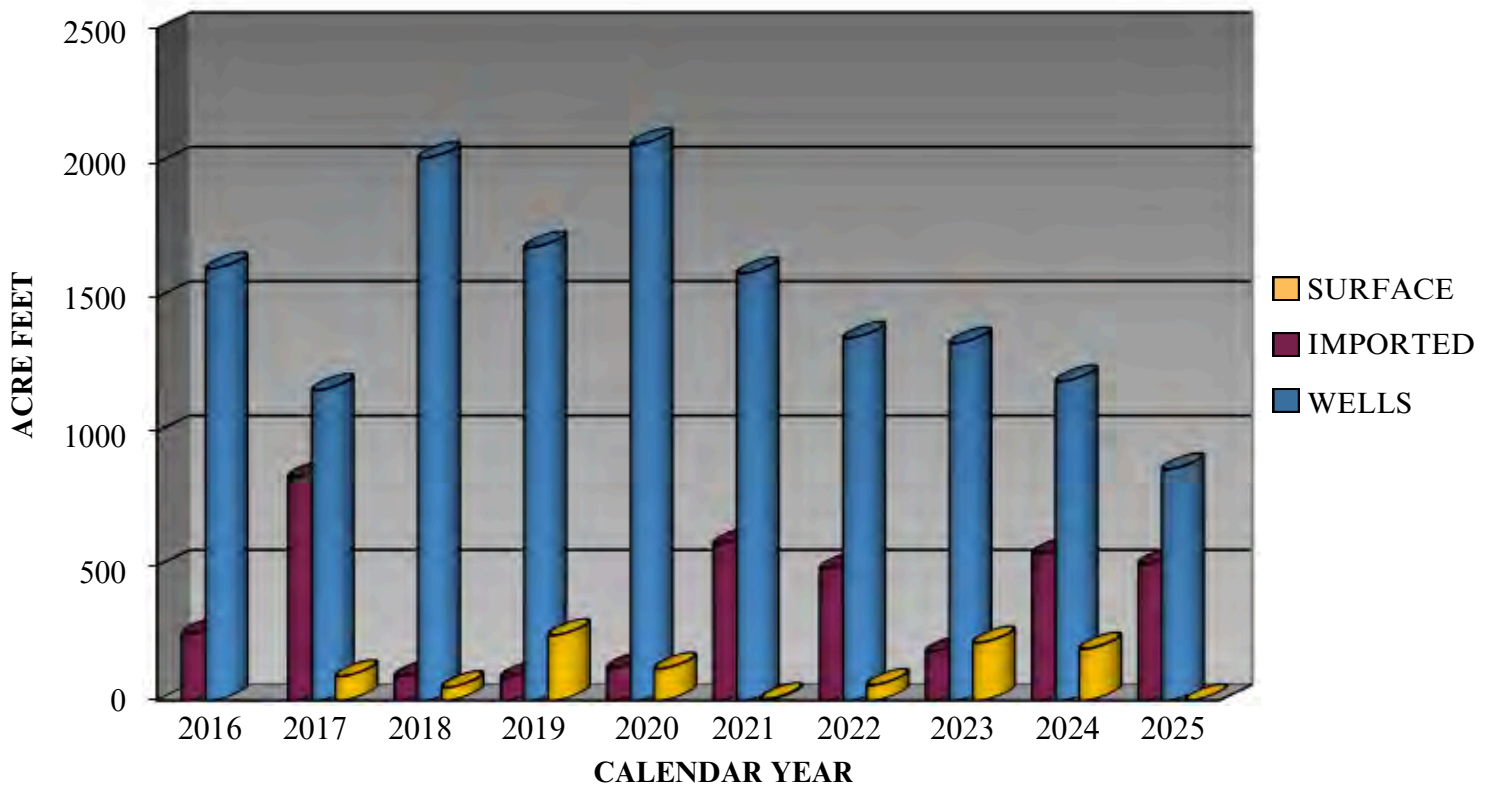
WELLS & PUMPING STATIONS	2025 ENERGY COST COST/AF	2024 ENERGY COST COST/AF	2023 ENERGY COST COST/AF	2022 ENERGY COST COST/AF	2021 ENERGY COST COST/AF
Well #3 ( <i>Pump to Main Plant</i> )	<b>5,533.41</b> N/A	6,920.60 N/A	4,151.16 N/A	1,912.84 N/A	2,030.89 N/A
Well #5 ( <i>Pump to Main Plant</i> )	<b>3,616.18</b> <b>100.31</b>	6,787.91 125.40	34,495.84 122.20	66,226.42 101.71	18,707.94 78.33
Well #6 ( <i>Pump to Main Plant</i> )	<b>82,530.64</b> <b>100.31</b>	162,034.93 139.79	143,098.64 140.28	90,519.75 129.87	164,123.84 121.62
Main Plant ( <i>Pump to Glenrose</i> )	<b>101,303.33</b> <b>75.04</b>	103,258.77 60.08	144,041.51 96.93	139,909.72 74.16	156,380.73 71.76
Glenrose Reservoir ( <i>Pump to Wapello</i> )	<b>52,198.29</b> <b>74.90</b>	62,227.41 75.59	54,694.54 81.87	56,615.12 60.64	58,298.39 59.41
Wapello Reservoir ( <i>Pump to Ware &amp; La Vina &amp; Swigart</i> )	<b>67,516.29</b> <b>107.76</b>	66,711.05 96.59	60,223.90 110.40	59,886.51 80.07	61,718.15 70.72
Ware Reservoir ( <i>Pump to Coulter</i> )	<b>31,585.81</b> <b>122.64</b>	15,848.59 130.39	6,830.71* 63.59	5,560.77* 32.20	5,738.72* 27.45
<b>TOTAL ANNUAL ENERGY COST</b>	<b>\$346,420.33</b> <b>\$253.14</b>	\$417,001.35 \$233.40	\$447,536.60 \$296.24	\$420,631.13 \$228.67	\$466,998.66 \$214.98

\*Total cost after applying Solar Energy Generation Credit.

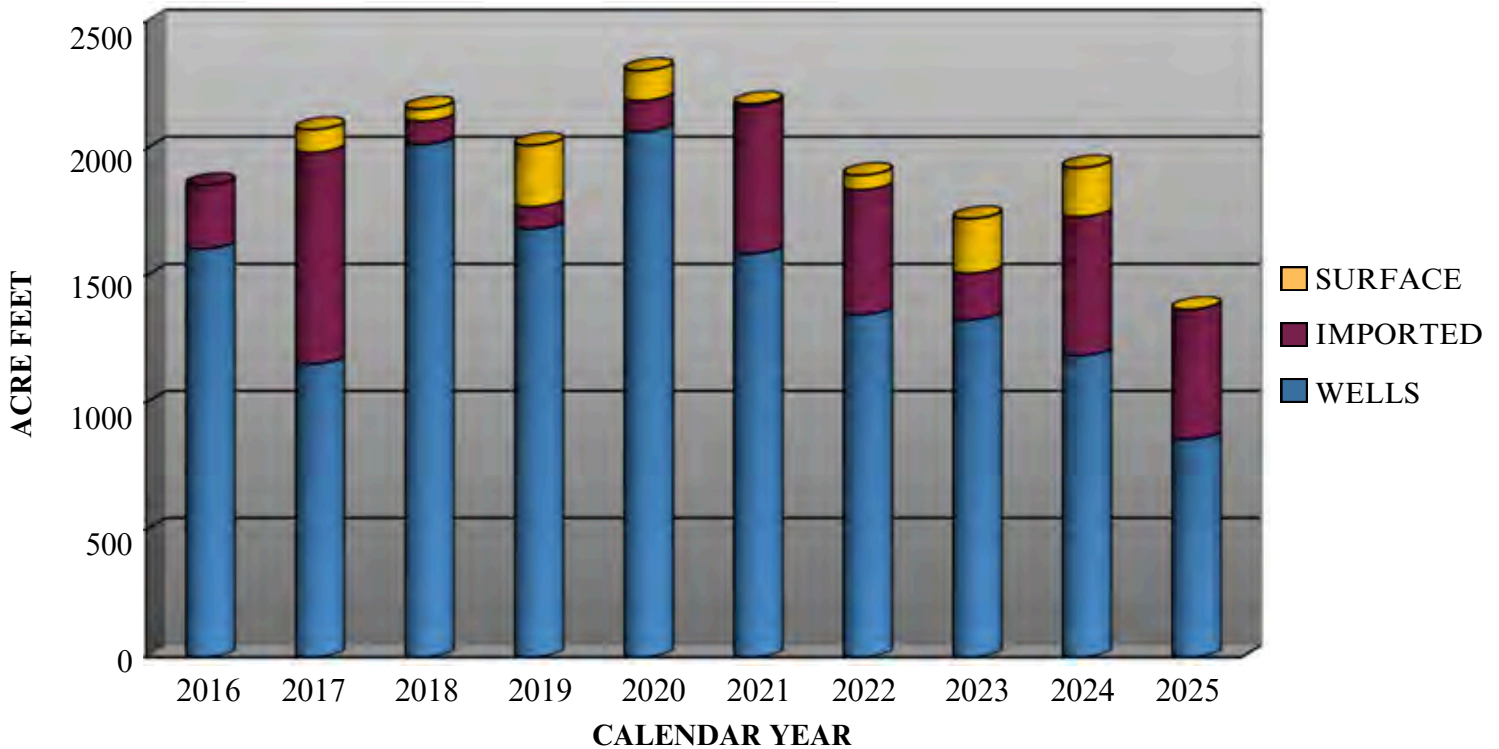
**ANNUAL PRODUCTION IN ACRE FEET  
2016-2025**

CALENDAR YEAR	WELL #3	WELL #5	WELL #6	SURFACE	IMPORTED	TOTAL PRODUCTION	LESS LEASE WATER DELIVERY	ACTUAL PRODUCTION (LINCOLN)	RAINFALL (INCHES)
<b>2025</b>	<b>0.60</b>	<b>36.05</b>	<b>822.76</b>	<b>0.00</b>	<b>509.13</b>	<b>1368.54</b>	<b>183.69</b>	<b>1184.85</b>	<b>27.86</b>
2024	0.90	54.13	1184.57	191.89	547.08	1978.57	47.30	1931.27	20.47
2023	0.58	282.29	1045.37	214.95	182.52	1725.71	0	1615.21	40.99
2022	0	651.14	697.00	57.09	491.40	1896.63	0	1896.63	18.18
2021	0.14	238.84	1349.50	4.97	583.87	2177.14	0	2177.14	23.82
2020	0.04	40.18	2028.31	117.66	121.73	2307.92	119.76	2188.16	15.00
2019	0.27	252.43	1431.90	242.43	87.51	2014.54	0	2014.54	36.16
2018	13.10	85.00	1919.72	48.23	91.55	2157.61	0	2157.61	15.99
2017	297.50	175.19	681.60	89.49	832.43	2076.21	0	2076.21	19.47
2016	597.73	1008.99		0	249.26	1855.98	0	1855.98	18.60

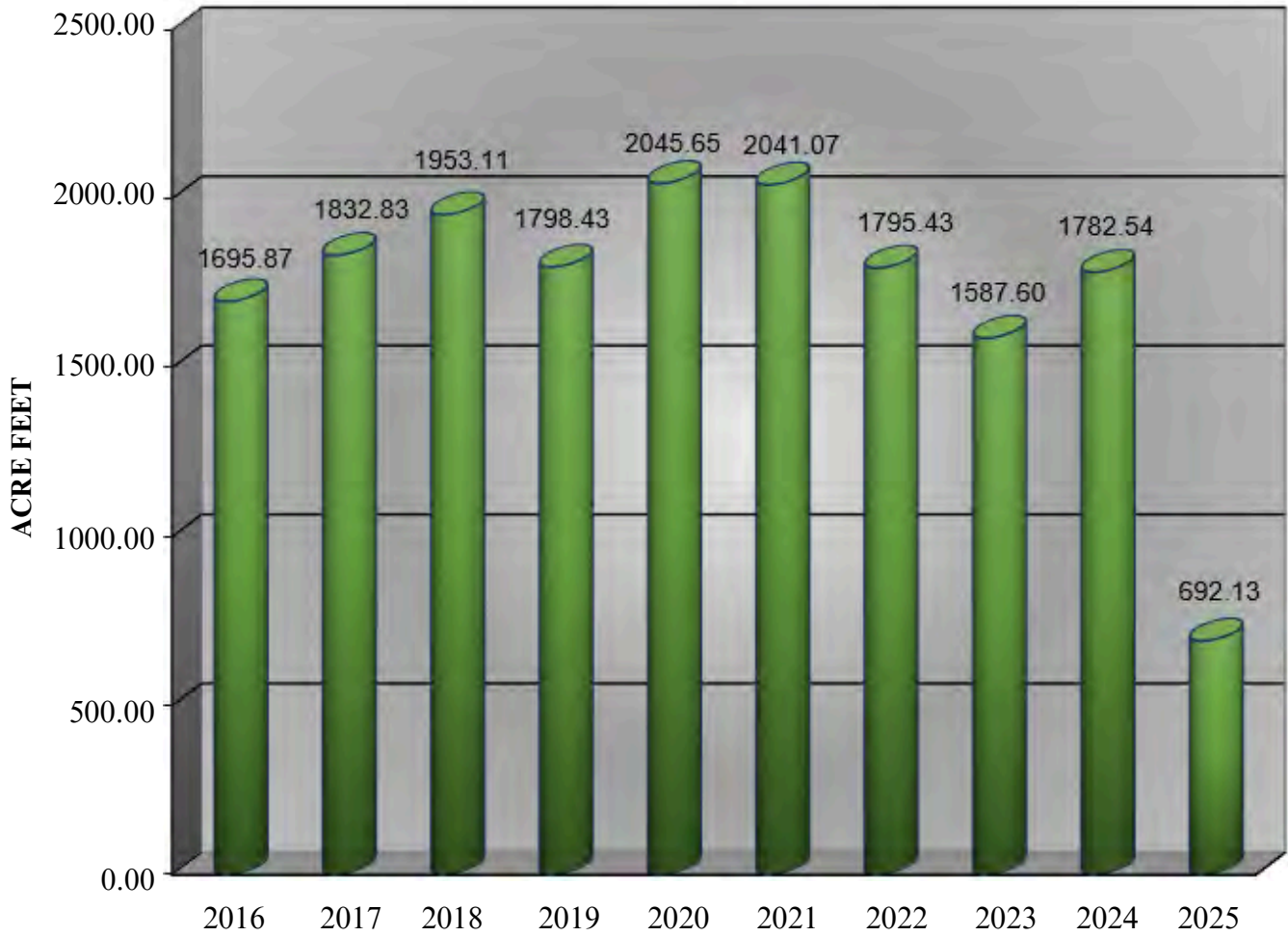
### ANNUAL PRODUCTION BY SOURCE - SURFACE, WELLS & IMPORTED



### TOTAL ANNUAL PRODUCTION - SURFACE, WELLS & IMPORTED



**ANNUAL WATER SALES IN ACRE FEET  
2016 - 2025**



## METERS AND SERVICE CONNECTIONS

New Service Connections installed in 2025	9
Meters replaced in 2025	116
Distribution system service connections in 2025	4508
2025 average consumption per meter per day - Residential	138 gal.
2025 average consumption per meter per day - Commercial	392 gal.
2025 average consumption per capita per day - Residential	81 gal.

## NUMBER OF METERS BY SIZE

5/8"	1387
3/4"	2562
1"	452
1 1/2"	28
2"	70
3"	6
4"	3
<b>TOTAL</b>	<b>4508</b>

## WELL PRODUCTION CAPACITY

Well # 3 (drilled 1924)	900 GPM
Well # 5 (drilled 1971)	1100 GPM
Well #6 (drilled 2016)	2000 GPM

## DISTRIBUTION SYSTEM IN LINEAR FEET

Distribution System	288,323
Pump Lines	18,128
<b>TOTAL</b>	<b>306,451</b> or 58 miles

## ANNUAL CANYON WATER BASIN RECHARGE IN ACRE FEET

Swigart	123.84
El Prieto	12.86
Millard/La Vina*	303.15
TOTAL	439.85

All canyon water that flows to the spreading basin is metered with an allowable extraction the following year based on Raymond Basin Management Board percolation calculations.

\*Maximum allowable spread credit from Millard/La Vina is 0.65 CFS.

## WATER QUALITY



California State Water Resources Control Board, Division of Drinking Water (DDW) requires Lincoln Avenue Water Company to take distribution system water quality samples which include bacteriological, total trihalomethanes, volatile organic compounds, general physical, general mineral and inorganics, along with other scheduled analyses. Lincoln's system was in compliance with standard DDW water quality standards at all times during 2025.

Following the Eaton Fire, an Unsafe Water Alert was issued on January 8, 2025. Through abatement activities and comprehensive water quality testing, the water system met all state and federal safety standards for potability. DDW authorized the removal of the Do Not Drink Do Not Boil Order effective March 13, 2025.

Water quality monitoring for fire related contaminants is ongoing. Test results will be available in the 2025 Consumer Confidence Report.

BOARD OF DIRECTORS  
FOR THE YEAR 2025



**JOHN CLAIRDAY**

**PRESIDENT**

John Clairday currently serves as president of Lincoln's Board of Directors. A graduate of the University of Southern California and Loyola Law School, Mr. Clairday retired from the Metropolitan Water District of Southern California where he served as Chief Deputy General Counsel within the legal department, and later, manager of the District's Real Estate Group. In addition to serving as president of Lincoln Avenue's Board, Mr. Clairday has been an active supporter of the San Gabriel Valley Habitat for Humanity, serving on its Board of Directors, and participating in several local and national build projects.



**ROBERT J. GOMPERZ**

**VICE PRESIDENT**

Robert J. Gomperz has been a Board member since 1990. He is retired from the Metropolitan Water District of Southern California where he coordinated various communications programs to the public about Metropolitan's programs and policies. Mr. Gomperz has been a public relations professional for more than five decades. He has a degree in Management from the University of Redlands. Prior to joining Metropolitan, he was Pasadena City College's Public Information Director for 12 years. Mr. Gomperz also represented West Altadena for 10 years as a Foothill Municipal Water District director and as a Southern California region director on the Association of California Water Agencies Board.



**LAWRENCE W. DUNCAN**

**1st VICE PRESIDENT**

Lawrence W. Duncan is a retired textile industry supervisor and a proud 57-year resident of Altadena. He is entering his 25th year of service on the Lincoln Avenue Board, where he also serves as the Company's Community Liaison Officer. An active member of the Southern California Water Utilities Association for many years, Lawrence was honored with the prestigious Doctor of Water Award in 2019 for his dedication to the industry. Like so many of our neighbors, Lawrence lost his home in the Eaton Fire. He remains deeply committed to helping Altadena rebuild and looks forward to seeing the community come back stronger than ever.



**DIEGO FERNANDEZ**

**TREASURER**

Diego Fernandez brings over 40 years of experience in the restaurant and hospitality industry, along with a broad range of business and management expertise. He began his career at 18 with El Cholo Restaurant Inc., rising to General Manager and later becoming a partner with RMG LLC. Over the years, he has helped launch multiple restaurant concepts, including El Cholo Pasadena, Doña Rosa Bakery & Taqueria, and Barn Burner Texas BBQ. Currently, Diego focuses on catering development with El Cholo Caters LLC and consults for NOOR Events Venue. A member of Lincoln Avenue Board since 2014, Diego is honored and privileged to call Altadena home since 2005. He remains committed to rebuilding and supporting the Beautiful Altadena community after losing his home in the Eaton Fire.



**VICKIE THOMPSON**

**ASSISTANT SECRETARY**

Vickie Thompson graduated from Humboldt State College and devoted 40 years of her career to the City of Hope – Beckman Research Institute in Duarte. She began as a Research Associate, later managed the Research Storeroom, and retired as the Manager of Purchasing. A longtime Altadena resident since 1993, Vickie shares the heartbreak of so many in our community, having lost her home in the Eaton Fire. She looks forward to rebuilding and once again enjoying peaceful walks in the nearby foothills with her husband. Vickie joined the Board in November 2020 and brings both her professional expertise and her deep commitment to community resilience to her role.

LINCOLN AVENUE  
**OFFICE STAFF**  
WATER COMPANY



Taijha Capellan  
Office Supervisor  
and Bookkeeper

**Years of Service**  
4



Wendy Childs  
Customer Service Representative  
and Water Stock Clerk

**Years of Service**  
17

Wendy, who officially retired in December 2024, returned temporarily to offer customer service support in the aftermath of the Eaton Fire.



Jesus Bugarin  
Customer Service Representative  
and Administrative Assistant

**Years of Service**  
15



Adrian Felix  
Water Quality Coordinator  
and Administrative Assistant

**Years of Service**  
3

LINCOLN AVENUE  
**FIELD STAFF**  
WATER COMPANY



**Name - Title - Years of Service**

**Back Row:**

**Jeremy Rogers - Water System Operator - 8 years**

**John Earnest - Water System Operator - 6 years**

**Michael Cotter - Field Supervisor - 22 years**

**Andres Estrada - Water System Operator - 4 years**

**Front Row:**

**Justin LaPoint - Water System Operator - 4 years**

**Dave Castillo - Water System Foreman - 11 years**

**Jack Harms - Senior Operator / Facilities Manager - 25 years**